

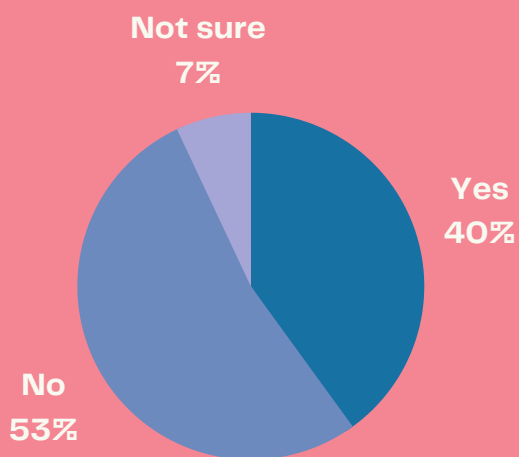
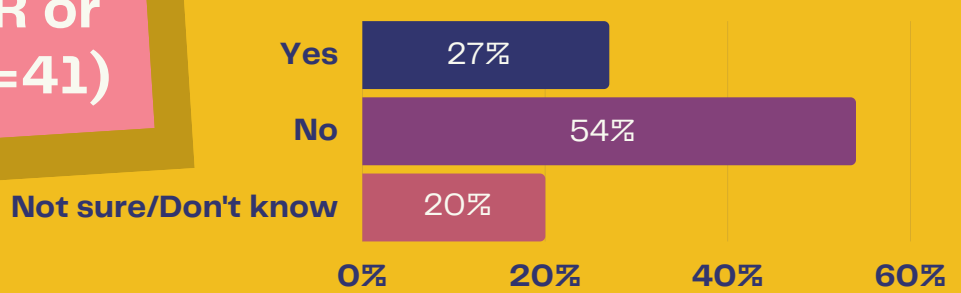
UPCEA SNAP POLL

Comprehensive Learner Records & Learning and Employment Records

Feb. 2022

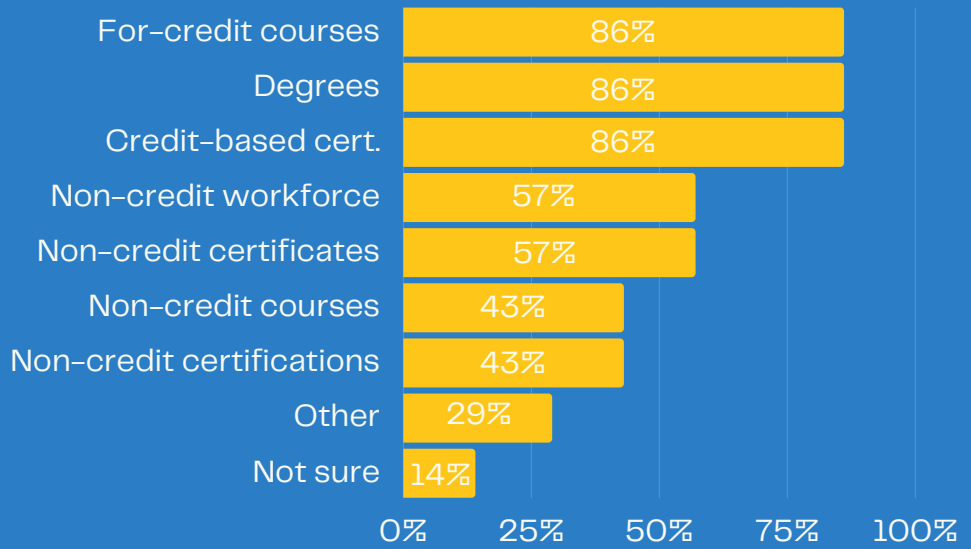
In February 2022, 41 individuals participated in a snap poll on Comprehensive Learner Records (CLR) and Learning and Employment Records (LER) at their institutions, including professional, continuing, and online education (PCO) units. Invitations were sent out via UPCEA's Membership Matters newsletter and links were posted on the UPCEA CORE discussion site.

Is your institution engaged in a CLR or LER project? (n=41)

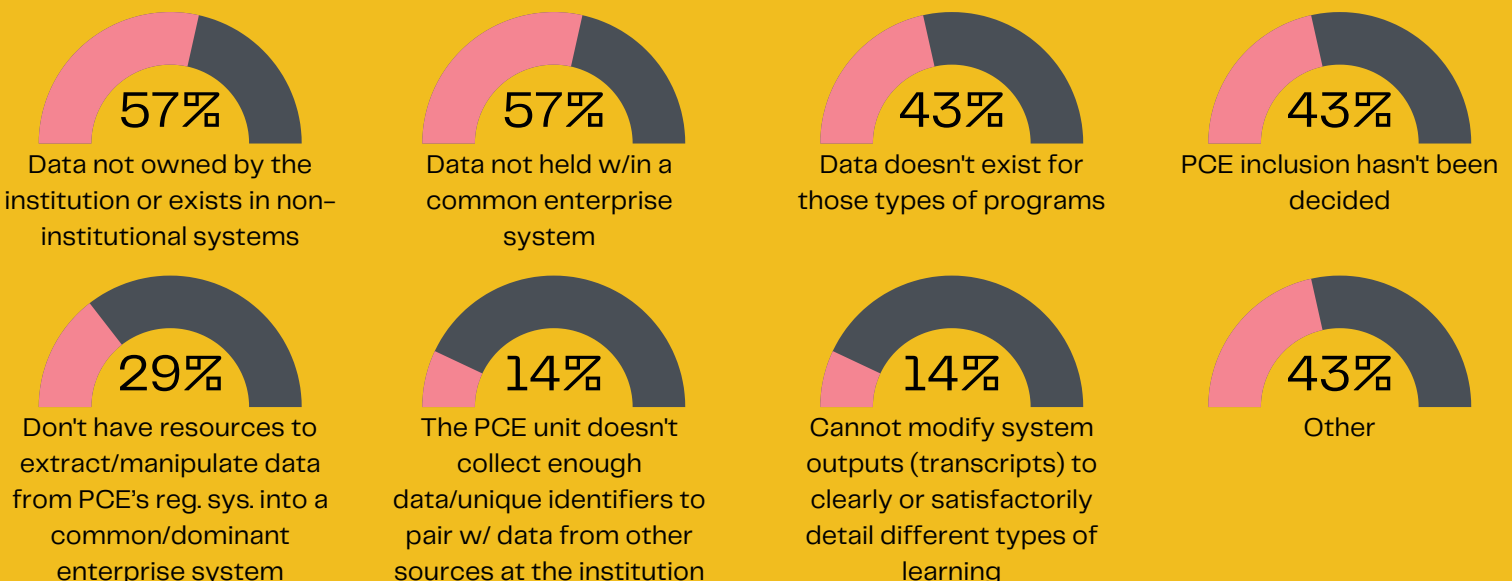


For those who are unsure or not engaged in a CLR or LER project at their institution, only 40% have heard of them. (n=31)

What data has been or will be included in your institution's CLR or LER? (n=7)



For those learning experiences NOT included in your institution's CLR or LER work, why are they being excluded? (n=7)



For more info, visit core.upcea.edu